

Stephanie Wallace



My name is Stephanie Wallace. I recently moved from my home country Australia to come and live in Toyota City, Japan in July 2010. I am working as an English teacher in the Toyota area to build on my skills as an educator, and to experience life in Japan. It has been an eventful experience so far, learning of the beauty of traditional Japanese culture, exploring the diverse landscapes that the country has to offer whilst meeting many new, and wonderful people.

Downtown Toyota City has a lot to offer the average sightseer from peaceful surrounds, to an insight into Japanese culture. From Toyota-shi Station you can head towards Como Square which offers luxurious shopping opportunities among the many traditional Japanese style restaurants. On the way towards Koromo Shrine, you can browse the many stores offering a taste of Japanese culture from Japanese dolls, and Kimono dress stores to products offering defining ingredients of Japanese cuisine. Arriving at Koromo Shrine, you can take a step back from the busy city life, and take in the peaceful serenity. From here, you can walk towards Sky Hall, and then cross the beautiful Kyucho Bridge to Toyota Stadium. If you're a bit peckish, dine at the reasonably priced restaurant offering spectacular views of Toyota City. Heading back across the beautiful Yahagi river via the intriguing Toyota Ohashi Bridge, you will find the beautifully preserved Chigonokuchi Park. This is a great place to sit down and read a book, or just take in the beautiful nature surrounds. From here, you can walk to the 'Toyota City Museum of Modern Industry and Living' and take a step back in time to experience a bit of Toyota cities history. Toyota City was formerly named Koromo City which prospered from its rich silk worm industry. As you head back to finish the tour, you can stop by the Sangokan to browse at the library. Foreign books, magazines and newspapers are available.

Downtown Toyota model plan

- Meitetsu Toyota-shi Station
↓ 5min.
- Sakuramachi-hon-dori shopping street
↓ 5min.
- Koromo Shrine
↓ 10min.
- Kyucho-bashi Bridge
↓ 10min.
- Toyota Stadium
↓ 15min.
- Chigonokuchi Park
↓ 5min.
- Toyota City Museum of Modern Industry and Living

Toyota Sangokan

Rising 13 stories and with two basement levels, this multipurpose building combines public facilities with office and commercial space. Floors 3 through 7 house the central library. The eighth floor has a Noh theater, and floors 10 through 13 accommodate a concert hall.

Toyota City Central Library (3rd floor through 7th floor)

The library is an established base for information, culture, interchange, and lifelong learning. Boasting around 880,000 titles, the shelves also offer plenty of technical automotive books and publications covering vehicles from all over the world.

- ☐ Tel : 0565-31-7060
- ☐ Hrs : Library: 10:00 to 17:00 (extended to 18:00 at weekends and public holidays)
- ☐ Closed : Mondays

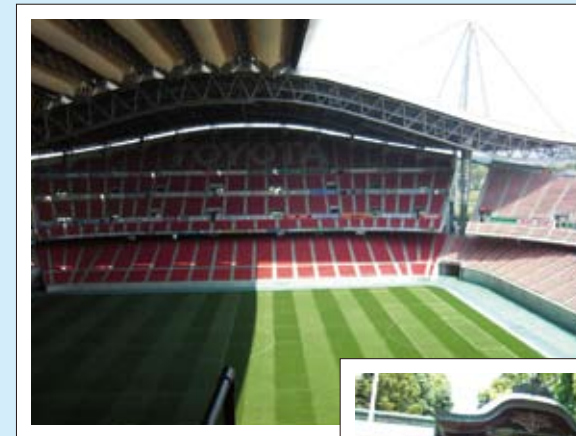
TOYOTA Stadium

Toyota Stadium was built in 2001, exclusively for soccer and rugby. It has become a symbol of Toyota City, and is known for its futuristic design.

Cross the beautiful Kyucho Bridge to Toyota Stadium, a fairly recent edition to Toyota City, and designed by famous Japanese architect, 'Kisho Kurokawa'. At the top of the stadium you can awe at the magnificence of the colossal structure, or even catch a game.

ENJOY TOYOTA Travelers' Guide

Downtown Toyota



Several must-sees sites in Toyota located around Meitetsu Toyota-shi Station. They are all located directly within 15 minutes walk from the station. You may take a leisurely stroll through all of the sites which will take you about three hours, or just a few places if you don't have much time.

Production: Toyota City / TIA
Co-editor : TIA volunteer group E-IFF

Toyota International Association (TIA)
Toyota Industry and Culture Center, 3rd Floor
1-25 Kozakahonmachi, Toyota City, Aichi Prefecture
TEL: 0565-33-5931 FAX: 0565-33-5950 e-mail: tia@hm.aitai.ne.jp

1 The view of east Meitetsu Toyota-shi Station
名鉄豊田市駅東口



2 Sakuramachi-hon-dori shopping street
桜町本通り商店街

You will find shops that have unique Japanese goods. (dried bonito, Kimono, uniform etc.)



Dolls for girl's festival



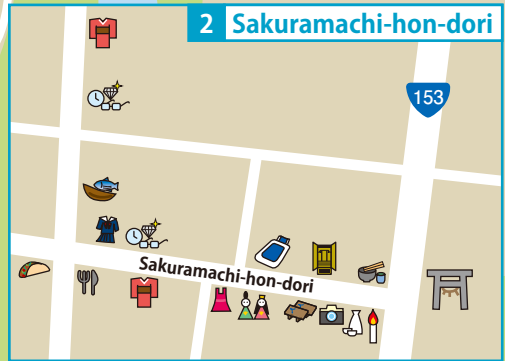
School uniform



Family Buddhist alter



2 Sakuramachi-hon-dori



8 There are English newspapers and magazines located in the Toyota City Central Library. (3rd floor), (closed on Mondays)
豊田市中央図書館



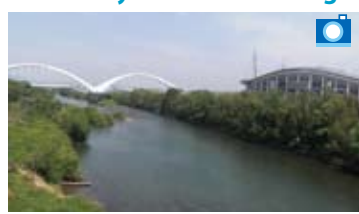
7 Toyota City Museum of Modern Industry and Living
豊田市近代の産業とくらし発見館



3 The west entrance of Koromo Shrine 拳母神社



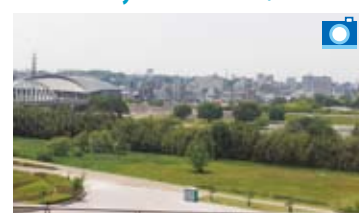
4 The view of Toyota Ohashi Bridge from Kyucho-bashi Bridge



5 The entrance of Toyota stadium 豊田スタジアム



5 The view of downtown Toyota from Toyota stadium (5th floor)



6 The entrance of Chigonokuchi Park 児ノ口公園



3 Koromo Shrine 拳母神社



This well-loved Shinto shrine is visited by people who pray for good health and future blessings for their children. During the feudal period it was a focal shrine for local people. During the autumn Koromo Festival, in a tradition handed down from the feudal period, you can see eight portable shrines splendidly arrayed.
Tel:0565-32-0718

6 Chigonokuchi Park 児ノ口公園



Chigonokuchi Park was awarded Civil Engineering Design Prize 2004 by JSCE. This park is not particularly big; however it is richly endowed with nature. Cheery trees in the park are especially beautiful in spring because the foliage is fresh and green. They are also fantastic in autumn, when the foliage is set ablaze with red and yellow tints. The huge Muku trees (Alphananthe aspera) are a spectacular sight to see.

7 Toyota City Museum of Modern Industry and Living
豊田市近代の産業とくらし発見館



'Toyota City Museum of Modern Industry and Living' was rebuilt from what used to be the ninth branch of Aichi sericulture office in 1922. (It is registered as National Culture Property) You can enjoy both regular and special exhibitions. You can learn about the changes in history, scenery and lifestyle of Toyota city during the Taisho and Showa era. (1912~1989) For example, there are spinning machines for sericulture, an old style living room and household utensils etc.